

CERTIFICATE OF LOCATION OF GOVERNMENT CORNER

NORTHEAST Corner of Section 32, Township 108 N, Range 40 W, 5th P.M.

STATE OF MINNESOTA, County of MURRAY

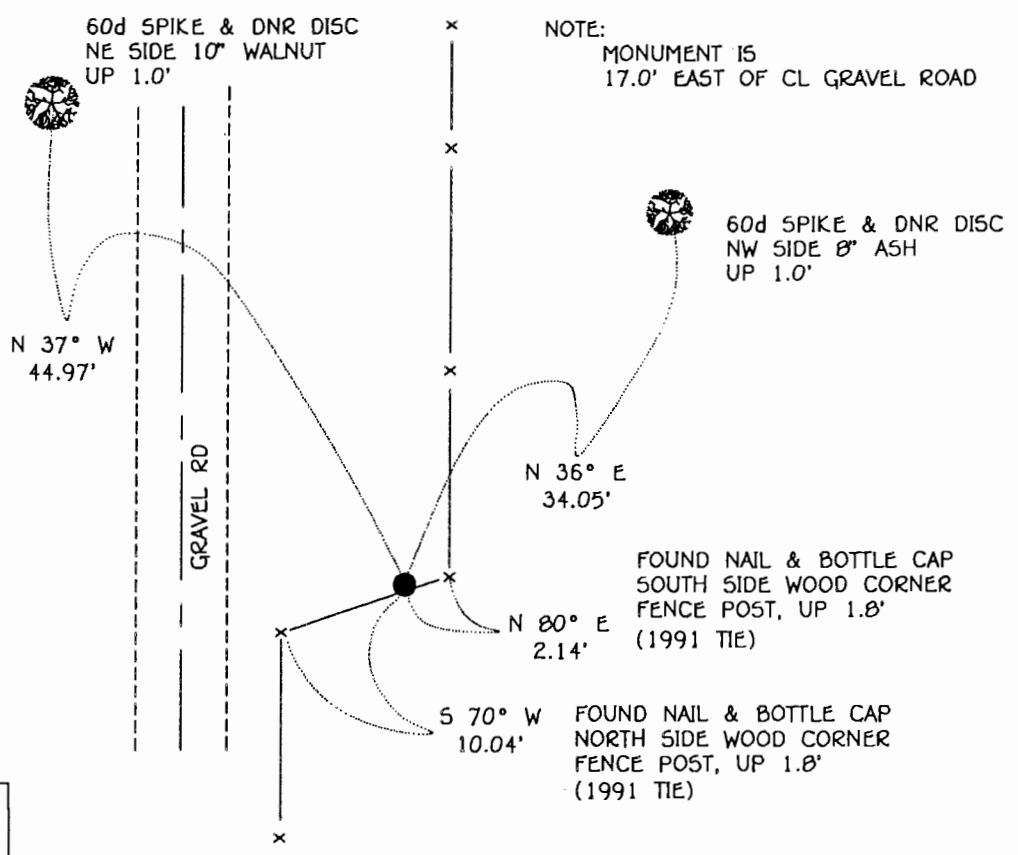
At the corner location shown on the sketch:

On 7-1-97 found a 1" DIAMETER AXLE WITH GEAR, UP 0.4'
DATE

left monument as found, lowered monument, removed monument (explain)

On _____ Placed a _____
DATE

SKETCH OF REFERENCE TIES



1983 MURRAY COUNTY
COORDINATE SYSTEM
N = 200481.413
E = 527119.876

BEARINGS OBSERVED WITH COMPASS

Statement of evidence relative to this corner location is on back of page.

JBM JUL '97
WAS01442

I hereby certify that this document and the data contained herein was prepared by me or under my direct supervision.
Bruce W. Shipp 4/20/98
SIGNATURE DATE

License Number 17003
 Land Surveyor, Professional Engineer
 County Surveyor, County Engineer

OFFICE OF THE COUNTY RECORDER
County of MURRAY MAY 28 1998

I hereby certify that this document was filed in the Co. recorders office at _____ .M. on the _____ day of _____ A.D., 19____
County Recorder Janna V. Johnson
By _____, Deputy
DOCUMENT NO. _____

Northeast Corner of Section 32, Township 108 North, Range 40 West

The DNR Bureau of Engineering contacted the following for survey information:

Minnesota Secretary of State's Office
Murray County Recorder's Office
Murray County Highway Engineer's Office
Lyle Moseng Land Surveying of Marshall
Rieke Carroll Muller Associates of Gaylord
Madsen Land Surveying, Inc. of Fairmont

- 1861 U.S. General Land Office notes obtained from the Secretary of State's Office show the corner marked with a wood post and trench with the following bearing trees marked:
5" Ash, South 21 1/2° West, 3.77 chains (248.82 feet)
4" Ash, North 82 1/4° West, 0.64 chains (42.24 feet)
4" Br. Oak, South 33 1/2° East, 4.20 chains (277.20 feet)
- 1877 December, the plat of the Subdivision of the Northwest Quarter of the Northwest Quarter of Section 33, obtained from the County Recorder's Office, by S.P. McIntyre, County Surveyor, shows corner but does not indicate what was found or set. No distances are shown on the plat but the following note is shown:
see field notes recorded in Surveyor's Book
- 1877 December, Surveyor's Record Book A, page 34, obtained from the County Recorder's Office, contains the field notes for the plat of the Subdivision of the Northwest Quarter of the Northwest Quarter of Section 33, by S.P. McIntyre, County Surveyor. Survey notes show corner but do not indicate what kind of monument was found or set. The only distances that are shown are along the north and east lines of the Northwest Quarter of the Northwest Quarter - both being 20.00 chains (1320.00 feet) long.
- 1906 Plat of Subdivision of the East Half of the Southeast Quarter of Section 32, Township 108, Range 40 obtained from the County Surveyor's Office, by J.W. Woolstencroft, County Surveyor, shows corner but does not indicate what was found or set.
- 1977 A worksheet for a survey in Section 29, obtained from Lyle Moseng Land Surveying, shows that an axle was found at corner. The corner is shown:
5306.28 feet from the northeast corner of Section 29
1707.07 feet from an axle found on the north line of Section 32
- 1991 December, a Certificate of Survey and a tie page from a field note book obtained from Madsen Land Surveying Inc. show that a 1 1/4 inch diameter axle was found at corner. The following ties are shown to corner:
1300.00 feet from an axle found on the north line of Section 32
in line with fences east and west
17.0 feet east of the center line of a north-south driveway
bottle cap in corner post, east, 2.1 feet
bottle cap in gate post, west-southwest, 10.00 feet
- 1997 July 1, DNR Bureau of Engineering found a 1 inch diameter axle up 0.4 of a foot with a gear on top at corner. Searched for and found record ties as shown on sketch of reference ties. The axle was found to be:
2636.60 feet from the north quarter corner of Section 33
5306.84 feet from the southeast corner of Section 32

Analysis of the above information led the DNR Bureau of Engineering to conclude that the found axle marks the location of the corner.